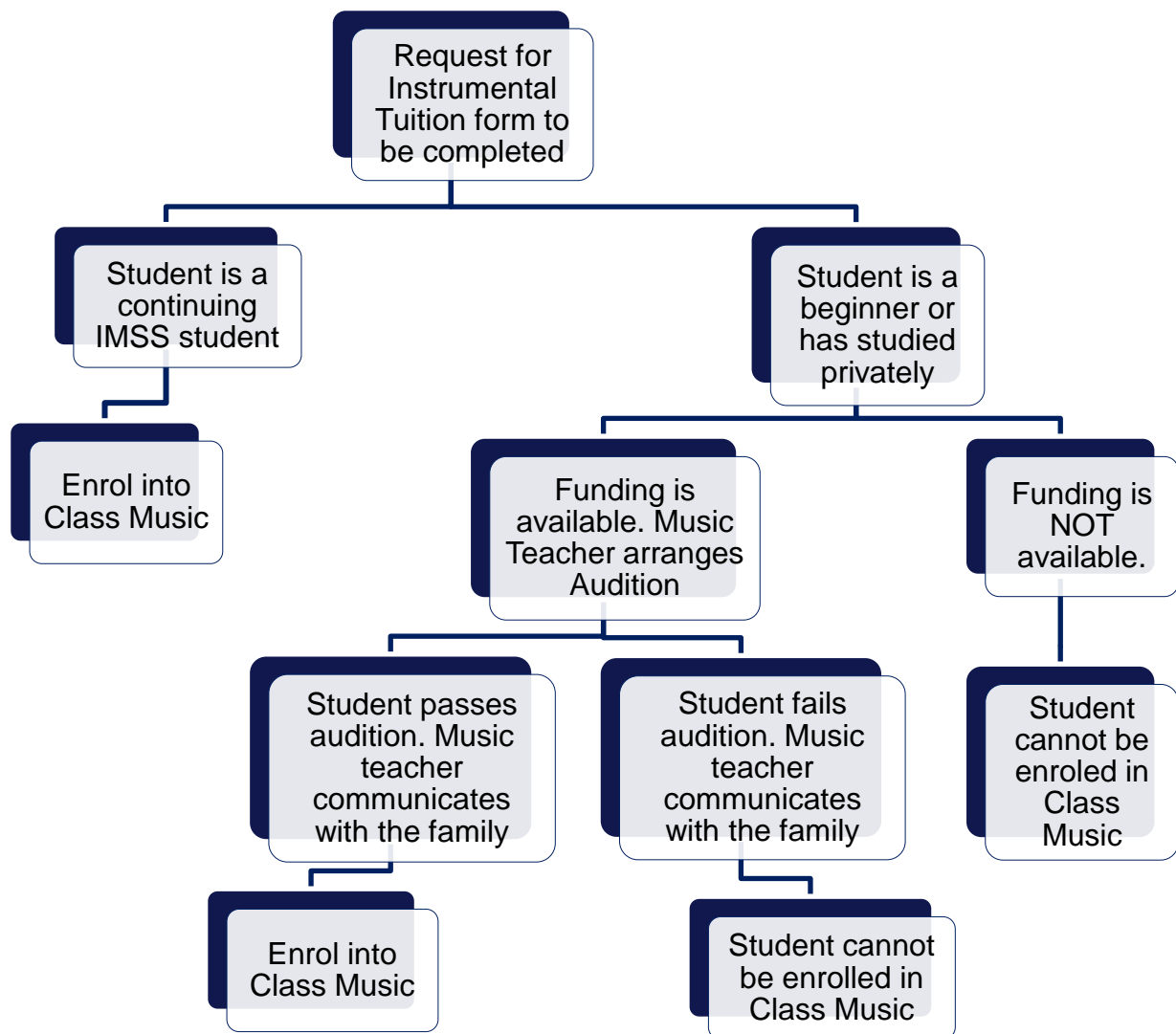


## 2024 PROCEDURES FOR CLASS MUSIC ENROLMENT

Student is interested in playing an instrument:



Entrance into the IMSS program is dependent on funding availability and teacher willingness to take non IMSS program students. Preference is given to students who have entered the IMSS program in primary school.

Availability of funding depends on:

- Time availability of the relevant teacher.
- IMSS additional funds availability to support the staff member.
- If the student is coming from a previous school with an IMSS program.